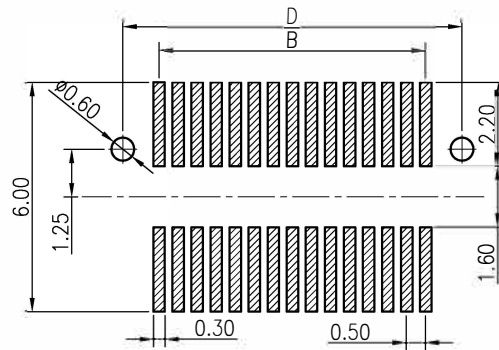
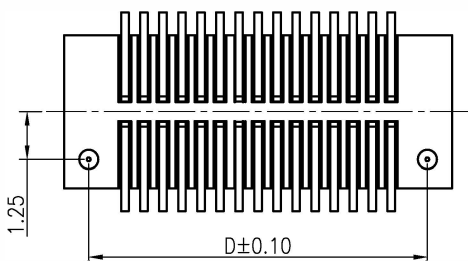


NOTES:

- 1.HUOSINGT:PA46 HIGH-TEMP THERMOPLASTIC UL94V-0 COLOR:WHITE
- 2.TERMINAL:PHOSPHOR BRONZE C5191
PLATING:1μ" GOLD FLASH OVERALL 50~100μ" NICKEL UNDER PLATED.
- 3.CODING INFORMATION: BB161-Gxx-XOR

PACKING: E: TUBE
R: CARRIER REEL
MATING HEIGHT
30---3.0 height
35---3.5 height
40---4.0 height
45---4.5 height
50---5.0 height
55---5.5 height
60---6.0 height
PLATING: G:GOLD FLASH
0.5 BOARD TO BOARD FEMALE WITH CUPULE TYPE
MAXCONN BTB CONNECTOR SERIES

MATING HEIGHT	3.0	3.5	4.0	4.5	5.0	5.5	6.0	6.5
FEMALE H1	1.40			2.00				
FEMALE H2	2.05			3.45				
MALE H1	0.85	1.35	1.85	0.95	1.45	1.95	2.45	2.95



RECOMMENDED PCB PATTERN DIM.

TOLERANCE : ±0.05

No. of contacts	Dimensions				No. of contacts	Dimensions			
	A	B	C	D		A	B	C	D
2*4	4.7	1.5	2.5	3.4	2*17	11.2	8.0	9.0	9.9
2*5	5.2	2.0	3.0	3.9	2*18	11.7	8.5	9.5	10.4
2*6	5.7	2.5	3.5	4.4	2*19	12.2	9.0	10.0	10.9
2*7	6.2	3.0	4.0	4.9	2*20	12.7	9.5	10.5	11.4
2*8	6.7	3.5	4.5	5.4	2*21	13.2	10.0	11.0	11.9
2*9	7.2	4.0	5.0	5.9	2*22	13.7	10.5	11.5	12.4
2*10	7.7	4.5	5.5	6.4	2*23	14.2	11.0	12.0	12.9
2*11	8.2	5.0	6.0	6.9	2*24	14.7	11.5	12.5	13.4
2*12	8.7	5.5	6.5	7.4	2*25	15.2	12.0	13.0	13.9
2*13	9.2	6.0	7.0	7.9	2*26	15.7	12.5	13.5	14.4
2*14	9.7	6.5	7.5	8.4	2*27	16.2	13.0	14.0	14.9
2*15	10.2	7.0	8.0	8.9	2*28	16.7	13.5	14.5	15.4
2*16	10.7	7.5	8.5	9.4	2*29	17.2	14.0	15.0	15.9
2*17	11.2	8.0	9.0	9.9	2*30	17.7	14.5	15.5	16.4

CUSTOMER ALL LINK CONN. TECHNOLOGY CORP.

REV: B	SIZE: A4	GENERAL TOLERANCE UNLESS OTHERWISE SPECIFIED X.X ±0.25 X.XX ±0.15 X.XXX	PART NO: BB161-Gxx-XOR
UNIT: mm	SCALE: 5:1		
SHEET NO: 1 OF 1		TITLE: 0.5 BOARD TO BOARD SMT V/T TYPE FEMALE	DRAWN BY: Kavin 2012-12-02
SER REVISIONS			

△	公母座对插口公差调整	Kavin	02.18.14'
SER	REVISIONS	CHK	DATE