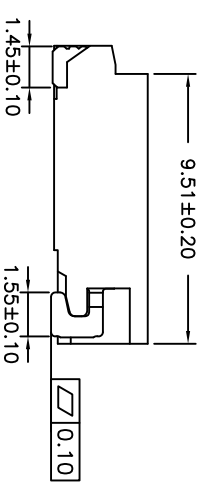
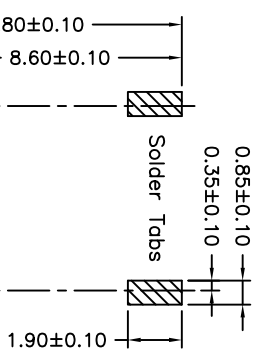
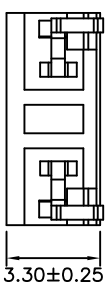
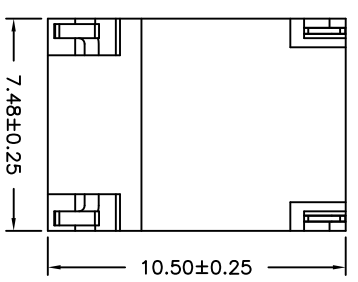
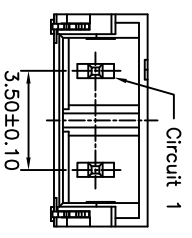
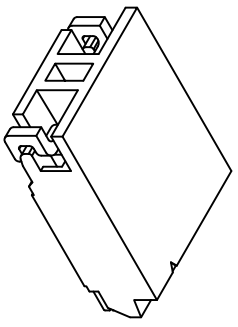


REV.	ECN NO.	LOCATIONS.	DESCRIPTION	DATE	CHANGER

SPECIFICATIONS
 Current Rating: 1A AC,DC
 Voltage Rating: 1400V AC,DC
 Temperature Range: -25°C ~ +85°C
 Contact Resistance: 10mΩ Max
 Insulation Resistance: 1000MΩ Min
 Withstanding Voltage: 3800V AC/minute
 Pin Material: Brass/Tin-plated
 Solder Tabs: Brass/Tin-plated
 Material: Nylon 6T,UL94V-0
 Color: Natural(Beige)



P.C.B LAYOUT

Ordering Code:

TP351WR-S-X X X X
 ① ② ③ ④

- ① Series No.
- ② Circuits:02
- ③ Plating code:
1 = Tin plated over Nickel
- ④ Other option: C= Tube Packing
A= Tape & Reel

GENERAL TOLERANCE		X±		X*± 1°	
X±		X±		X*±	
.XX± 0.30		.XX±		.XX*±	
.XX± 0.20		.XX±		.XX*±	
.XXX± 0.10		.XXX±		.XXX*±	
CUSTOMER DRAWING		PART NO.		DRAWING	
PAUL		TP351WR-S-XXXX		FRANK	
CHECKED: PAUL		SCALE: 5:1		SHEET: 1 / 1	
APPROVED: PAUL		DATE: 20120912		CHANGER: A	

鉅創科技有限公司
 TRONTEK TECHNOLOGY CO.,LTD.

3.50mm PITCH 90WATER-SMT TYPE ULTRA LOW PROFILE

20120912

mm



1 / 1

A