

REV.	ECN NO.	LOCATIONS.	DESCRIPTION	DATE	CHANGER
------	---------	------------	-------------	------	---------

Material:

* Insulation: Glass filled polyester UL 94V-0

* Contact: Brass

Ordering Code:

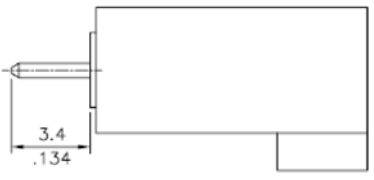
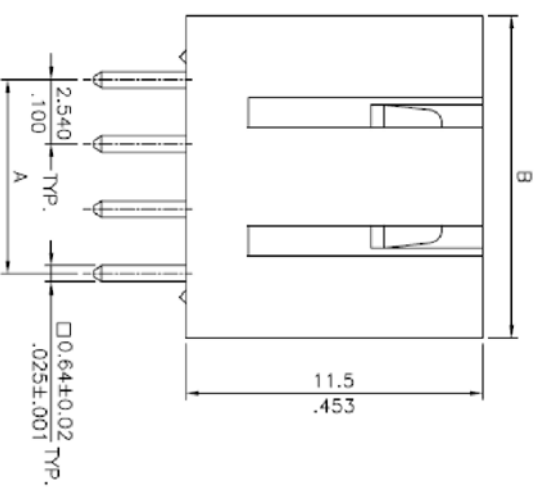
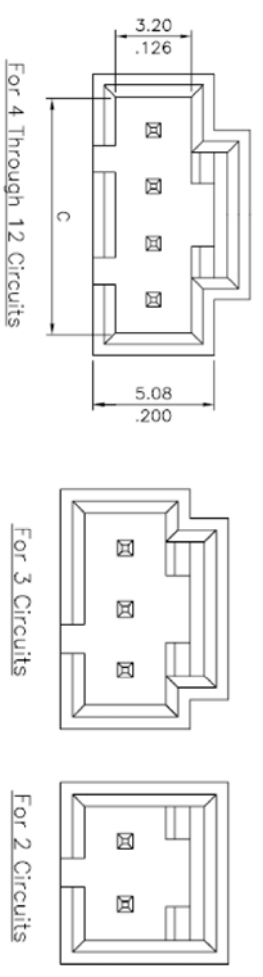
TS241WV - X X X X
 ① ② ③ ④

① Series No.
 ② No. of Circuits

③ Plating option:
 T = 3.05µm(120µ") Min. Tin
 over 0.76µm(30µ") Nickel

④ Type: V= Straight

Packing: Bag



Circuits	Dimension		
	A	B	C
2	2.54(.100)	7.5(.295)	5.52(.217)
3	5.08(.200)	10.1(.398)	8.06(.317)
4	7.62(.300)	12.6(.496)	10.60(.417)
5	10.16(.400)	15.1(.594)	13.14(.517)
6	12.70(.500)	17.7(.697)	15.68(.617)
7	15.24(.600)	20.2(.795)	18.22(.717)
8	17.78(.700)	22.8(.898)	20.76(.817)
9	20.32(.800)	25.3(.996)	23.30(.917)
10	22.86(.900)	27.8(1.094)	25.84(1.017)
11	25.40(1.000)	30.4(1.197)	28.38(1.117)
12	27.94(1.100)	32.9(1.295)	30.92(1.217)

A = 2.54 x No. of Spaces
 B = A + 5.1
 C = A + 2.98
 * Available in 2 through 18 circuits

GENERAL TOLERANCE		X ± 1°	
X ± 0.30	X ±	X ± 1°	
XX ± 0.20	XX ±	XX ±	
XXX ± 0.10	XXX ±	XXX ±	
TITLE:		鉅創科技有限公司 TRONTEK TECHNOLOGY CO., LTD.	
TITLE:		WAFER 2.54mm 180° DIP TYPE	

CUSTOMER DRAWING	PART NO.	TS241WV-XXXXV	DWG NO.	20110821
------------------	----------	---------------	---------	----------

APPROVED	CHECKED:	DRAWN:	III	SCALE:	SHEET:
Tony	Tony	sunny	mm	1:1	1 / 1
				PROJ.	REV.
				⊙	A