

- Note:
- Material:
 - Housing: thermoplastic high temp.UL94V-0; Color: natural.
 - Latch: thermoplastic high temp.UL94V-0; Color: black.
 - Terminal: copper alloy.
 - Fitting Nail: copper alloy.
 - Finish:
 - Terminal: Underplating: Au/matt Tin overall.
 - Fitting Nail: Underplating: matt Tin overall.
 - Product must comply RoHS specification.
 - Product No:

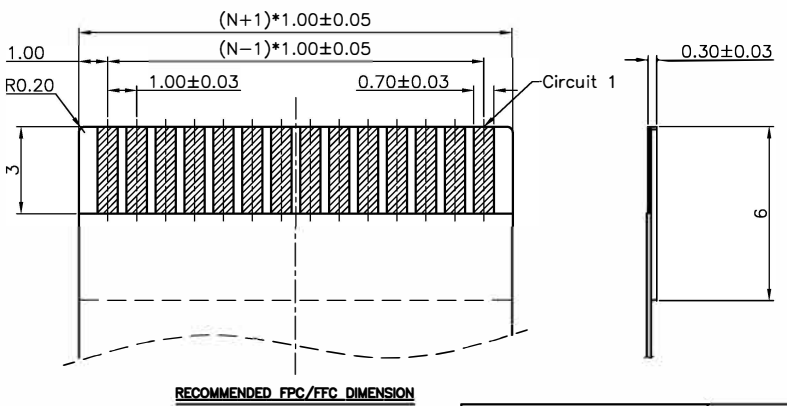
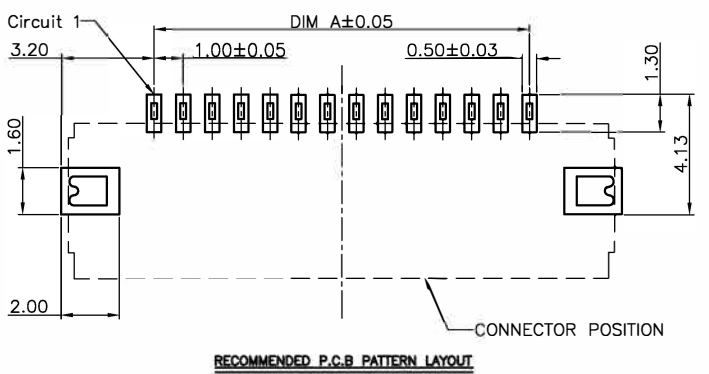
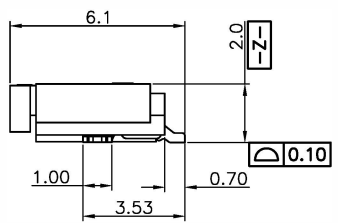
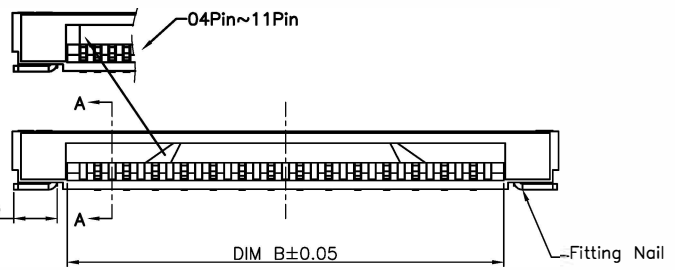
Series No. TFP613-XX X X -00
 NO. of Circuits

REMARKS
 HF:Halogen free

PLATING
 1:Gold flash 1u"
 2:Gold flash 2u"
 3:Gold flash 3u"
 B:Bright-Tin 90-120u"
 C:Matt-Tin 90-120u"

PACKING
 A:Tape&Reel
 C:Tube

CKTS	DIM A	DIM B	DIM C
4	3.00	5.10	8.90
5	4.00	6.10	9.90
6	5.00	7.10	10.90
7	6.00	8.10	11.90
8	7.00	9.10	12.90
9	8.00	10.10	13.90
10	9.00	11.10	14.90
11	10.00	12.10	15.90
12	11.00	13.10	16.90
13	12.00	14.10	17.90
14	13.00	15.10	18.90
15	14.00	16.10	19.90
16	15.00	17.10	20.90
17	16.00	18.10	21.90
18	17.00	19.10	22.90
19	18.00	20.10	23.90
20	19.00	21.10	24.90
21	20.00	22.10	25.90
22	21.00	23.10	26.90
23	22.00	24.10	27.90
24	23.00	25.10	28.90
25	24.00	26.10	29.90
26	25.00	27.10	30.90
27	26.00	28.10	31.90
28	27.00	29.10	32.90
29	28.00	30.10	33.90
30	29.00	31.10	34.90



CUSTOMER DRAWING	
Tolerance Unspecified	Size: A4
0.0 ±0.15 0° ±5°	Unit: MM
0.00 ±0.10 0°0 ±3°	Scale: 1:1
0.000 ±0.05 0°00 ±1°	Page: 1 OF 1
Project View	Rev: A

ALL LINK CONN. TECHNOLOGY CORP.			
Product Name: 1.0Pitch H=2.0 FPC Easy-on R/A D/C Type1 SMT CONN			
Product No: TFP613-XXXX-00			
Designer: Allan 03/23/11	Checked:	Approved:	