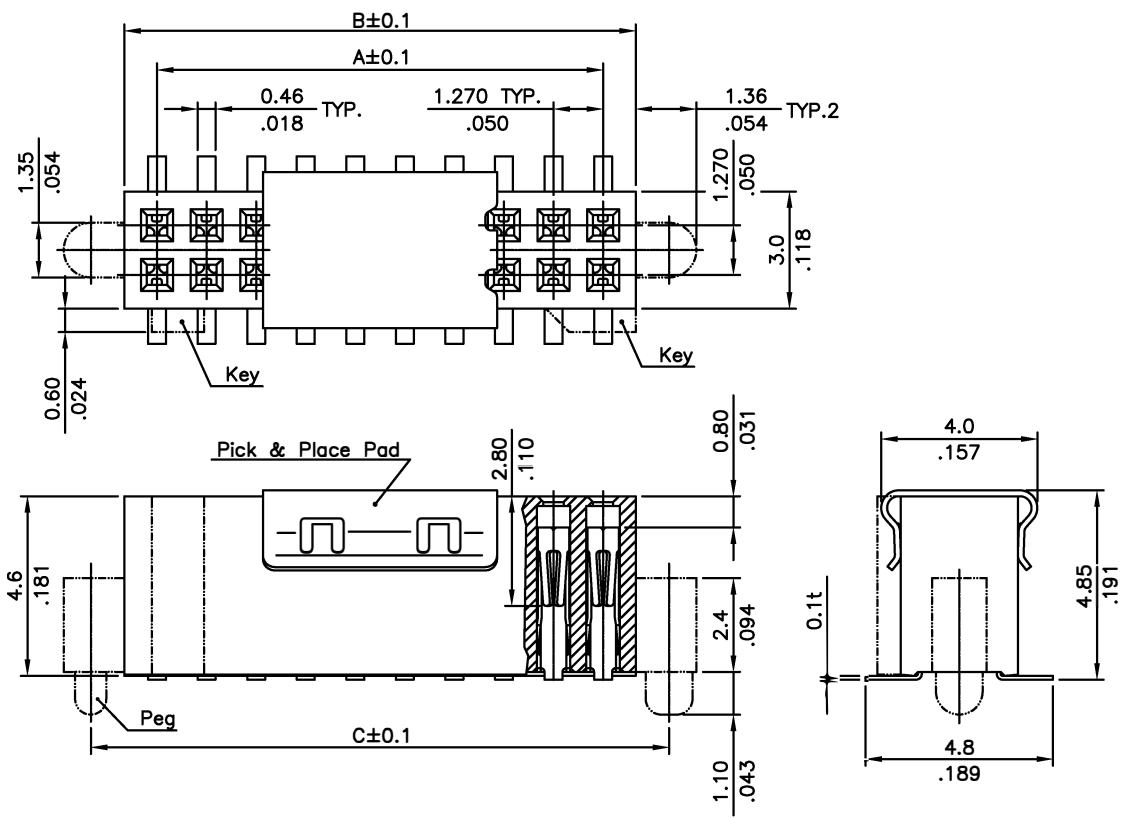


REV.	ECN NO.	LOCATIONS	DESCRIPTION	DATE	CHANGER



Material:

- * Housing : LCP or Nylon 9T, Color Black
- * Contact: Phosphor Bronze
- * Pick & Place Pad: Phosphor Bronze

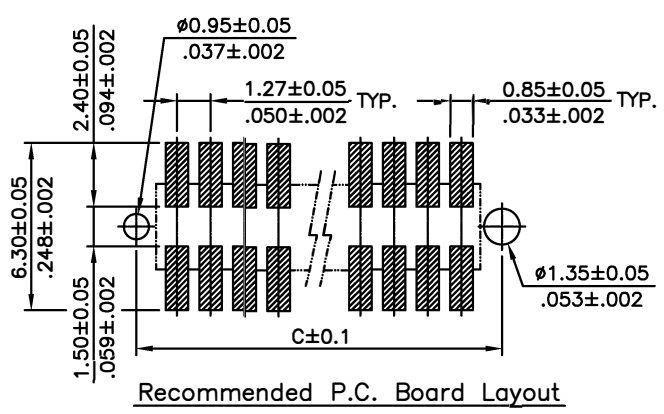
Ordering Code:

W67A8X01-XX X X
 ① ② ③④⑤

- ① Series No.
- ② Plating code:
G=Gold Flash
- ③ No. of Contact: 06 to 100
- ④ OTHER OPTIONS:
2= Without Peg , 6= With Peg
- ⑤ C=WITHOUT PICK & PLACE PAD (TUBE PACKING)
A=With Pick & Place Pad
Tape & Reel

DIM. A = 1.27 X No. of Spaces
 DIM. B = DIM. A + 1.67
 DIM. C = DIM. A + 3.05

* Available in 6 through 100 Circuits



GENERAL TOLERANCE		ALL LINK CONN. TECHNOLOGY CORP.			
X±	X°± 1°	TITLE: FEMALE HEADER 1.27mm(.050") DUAL ROW H4.6mm SMT			
.X± 0.25	.X°±				
.XX± 0.15	.XX°±				
.XXX± 0.08	.XXX°±				
CUSTOMER DRAWING		PART NO. W67A8G01-XXXX	DWG NO. 20120512		
APPROVED Paul	CHECKED: Paul	DRAWN: sunny	UNIT: mm	SCALE: 1:1	SHEET: 1 / 1
			PROJ.	REV. A	